

MONTHLY MEMBERSHIP PROGRESS REPORT

District 325 C

Results as of: 3/31/2024

GMT:

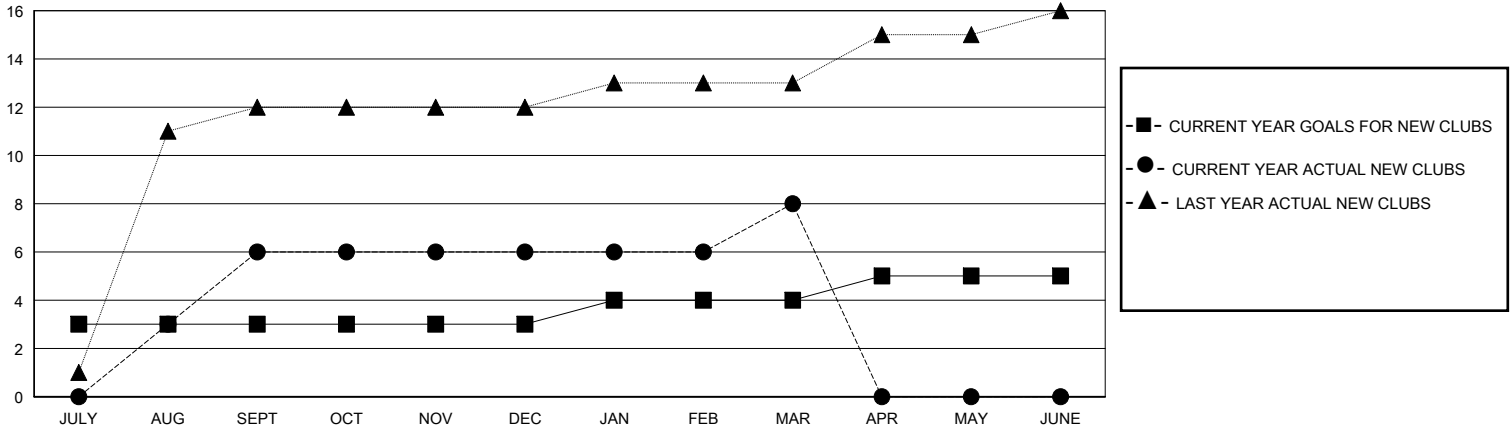
LOCATION NEPAL

GMT CA

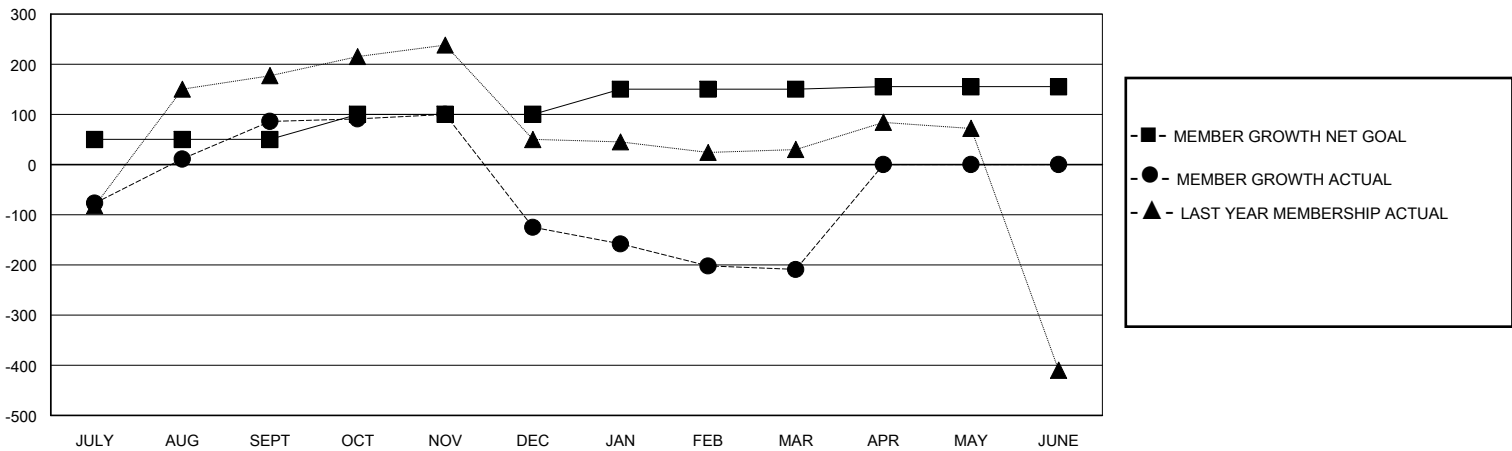
Clubs			
RESULTS FOR 2023-2024			
QUARTER	NEW CLUB GOAL	NEW CLUBS	DROPPED CLUBS
JULY/AUG/SEPT	3	6	2
OCT/NOV/DEC	0	0	8
JAN/FEB/MAR	1	2	7
APR/MAY/JUNE	1	0	0

Members			
RESULTS FOR 2023-2024			
QUARTER	MEMBER GROWTH NET GOAL	MEMBER GROWTH ACTUAL	DROPPED MEMBERS ACTUAL (including transfers)
JULY/AUG/SEPT	50	289	183
OCT/NOV/DEC	50	80	287
JAN/FEB/MAR	50	142	196
APR/MAY/JUNE	5	0	0

GOALS AND ACTUAL NEW CLUBS CUMULATIVE



GOALS AND ACTUAL MEMBERS CUMULATIVE



DROPPED CLUBS: 17	85 CLUBS OF 166 ADDED 1 OR MORE NEW MEMBERS	GENDER DISTRIBUTION	
		MALE 2,379 (72.20%)	FEMALE 914 (27.74%)
DROPPED MEMBERS		CLICK HERE FOR CUMULATIVE MEMBERSHIP DATA	TOTAL FAMILY UNIT MEMBERS 1,965
DECEASED 2	CLUB CANCELLED 235		FAMILY MEMBERS PAYING HALF DUES 1,367
OTHER 429	TOTAL 666		